



School District of Manawa

Building & Grounds COMMITTEE MEETING

*Manawa School District Office - Board Room
800 Beech Street, Manawa WI
(920)596-2525*

Wednesday, April 10, 2024
4:50 P.M.

Board of Education Committee Members:
Griffin (C), Jepson, & Riske

❖ **CALL TO ORDER**

- ❖ **ROLL CALL** - *Verification of Quorum*
➤ *B.O.E. Members Present:*

❖ **COMPLIANCE WITH OPEN MEETING LAW NOTIFICATION** [*§19.84(2) Wis. Stats.*]

❖ **AGENDA**

1. Tour of Facilities
 - a. The Spring Tour will have a Technology (IT) Focus
2. Building & Grounds Maintenance
 - a. Updates and Discussion
3. Capital Improvements List
 - a. Ongoing Discussion regarding Facility concerns:
 - i. Possible Recommendations
4. Secondary School Storage Shed Discussion
 - a. Discussion around Proposals
5. Environmental Management Consulting - Safety/Training Service
 - a. Informational Document

❖ **FUTURE MEETING AGENDA ITEMS**



❖ **ADJOURN**

* Any person with a qualifying disability under the Americans with Disabilities Act that requires the meeting or material to be in accessible format, please contact the District Administrator to request reasonable accommodation. The meeting room is wheelchair accessible. This meeting is a meeting of the Board of Education in public for the purpose of conducting the School District's business and is not to be considered a public hearing. There may be a time for public comment during the meeting as indicated in the agenda.

**Upon request to the District Administrator, submitted twenty-four (24) hours in advance, the District shall make reasonable accommodations including the provision of informational material in an alternative format for a disabled person to be able to attend this meeting.



Environmental Management Consulting, Inc.

Environmental Management Consulting, Inc

Environmental Management Consulting, Inc. (EMC) which is a member of the American Industrial Hygiene Association (AIHA) is a multi-disciplined environmental consulting firm based in Lake Mills, Wisconsin. EMC carries a full line of Professional Liability Insurance, which is essential in providing the client with the proper protection. EMC has been providing quality, consulting services to both the public and private sectors since 1991.

Our goal is to devise the most cost effective efficient and timely plan possible to assure compliance with all local, state, and federal regulations governing hazardous materials in the home and work place.

EMC's personnel have extensive experience in a variety of environmental disciplines, from asbestos related services to indoor air quality, mold remediation and further to underground storage tank management, just to name a few. EMC's personnel are constantly updating certifications and their knowledge base by attending courses to keep abreast of upcoming environmental developments which may effect the client.

EMC's personnel have been involved in the industry for over 25+ years and have since provided numerous clients, quality, consulting services. Some of the clientele have included; school districts, property management firms, private non-profit organizations, shopping malls, private industry, municipalities, state and federal government agencies, health care facilities, power generating utilities and paper mills.

All of EMC's field staff is highly qualified and degreed in the occupational health safety, industrial hygiene or related field. Traditionally, many of our clients have retained our services after an inspection or citation from the Environmental Protection Agency or the Occupational Safety and Health Administration. However, while we help immediately resolve these EPA-OSHA prompted situations that continue to arise, we are constantly striving to eliminate potential exposure to these federal agencies while providing consulting services to manage personnel exposures and reducing potential liabilities for the client.

Feel free to visit our website at www.emc-wi.com or contact us to learn what EMC can do for you.

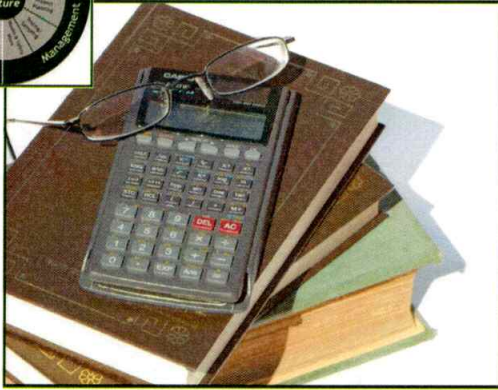
William A. Freeman, President
John T. Bushman, Vice President
James P. Jozwiakowski, Vice President

bfreeman@emc-wi.com
jbushman@emc-wi.com
jjozwiakowski@emc-wi.com

Securing Safer Futures...

W 7748 Cty Hwy V, Lake Mills, WI 53551 ◆ 920.648.6343 Fax: 920.648-4370 ◆ www.emc-wi.com

THE EMC WAY



EDUCATION

A key component to a safer future is educating those employees who may be effected by potential environmental health and safety hazards. EMC supplies this education

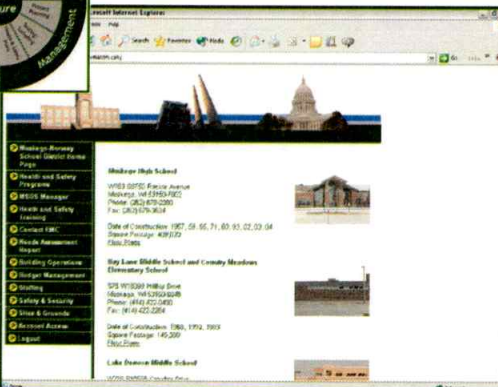
- ◆ Printed Materials
- ◆ Newsletters
- ◆ Training Seminars
- ◆ Presentations
- ◆ Published Articles
- ◆ Website
- ◆ Staff Training
- ◆ "Ask the Expert"



MANAGEMENT

Properly managing your organization's environmental health and safety is essential to ensuring a safer future. This is only achieved by expert management through proper assessment, planning and process design.

- ◆ Inspections
- ◆ Analysis
- ◆ Project Design
- ◆ Project Management
- ◆ Written Safety Plans
- ◆ Consultation



COMMUNICATION

With the adoption of new communication tools, offered only by EMC, you can be involved in your environmental health and safety management like never before.

- ◆ Technology
- ◆ Quality Response
- ◆ Availability
- ◆ Staff Consistency
- ◆ Central Location
- ◆ Proper Staffing Levels

800.279.2020

www.emc-wi.com



CORE SERVICES



Effective environmental health and safety (EH&S) management comes only from a well-rounded approach.

It is for this reason that EMC's well-rounded approach is applied to every service we offer. By approaching each potential hazard with these three keys in mind, EMC's professional consultants are able to effectively identify the problems and customize solutions to your unique needs.

Then, you can move forward confident that you are working to secure a safer future.



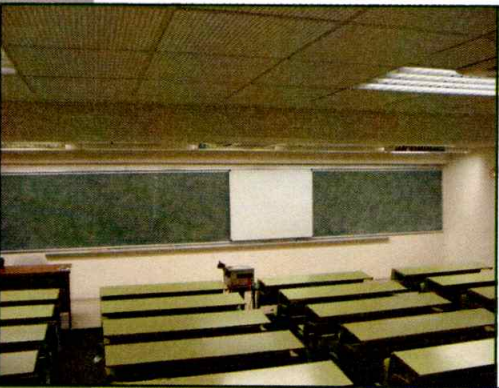
ENVIRONMENTAL

- ◆ Asbestos
- ◆ Lead
- ◆ Leaking Underground Storage Tanks
- ◆ Safe Drinking Water
- ◆ Phase I and Phase II Environmental Site Assessments



INDUSTRIAL HYGIENE

- ◆ Facility Safety Audit
- ◆ Industrial Hygiene Survey
- ◆ Indoor Air Quality
- ◆ Hearing Conservation Survey



HEALTH AND SAFETY

- ◆ Hazard Communication
- ◆ Written Health and Safety Plans
- ◆ Expert Witness Testimony
- ◆ Health and Safety Training

800.279.2020

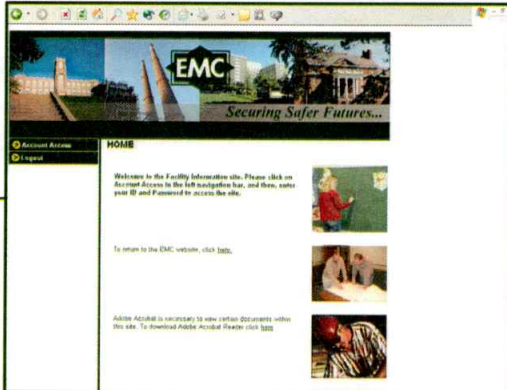
www.emc-wi.com



TECHNOLOGY

The world has quickly become a world of technology and, until now, environmental health and safety has tragically been left behind. Organizations can no longer afford to manage their EH&S with papers, binders and filing cabinets. It is not safe, secure, or efficient monetarily or schedule-wise.

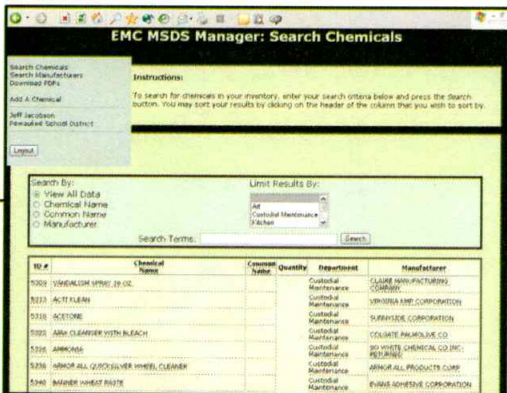
EMC is bringing your EH&S up-to-date and securing your safer future with the technology of today.



www.facilityinformation.com

The management of environmental health and safety in the past caused trees everywhere to shake with fear. No longer!

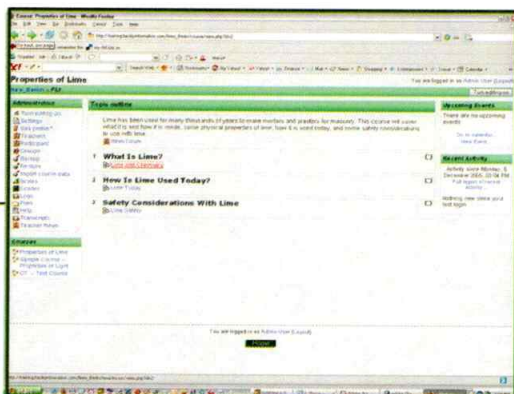
With EMC's revolutionary online management tool, you can view your EH&S information from anywhere and at any time. This tool allows you to distribute information to important parties when you need to and communicate with EMC effectively.



Electronic MSDS Management

MSDS management is important to the health and safety of your employees. Traditionally this essential activity was managed through papers and binders—reducing the likelihood that the documents were kept up to date and limiting the access points to the important information.

Now, with EMC's electronic MSDS Manager provides access to MSDS information from any location, allows for regular updates and is more time efficient than traditional methods.



Online Training Tools

EMC offers training resources on our website to meet your supplemental training needs and make sure your employees are equipped to secure a safer future.

- ◆ Online presentations
- ◆ Essential documents available for download
- ◆ Internet links to additional information

800.279.2020

www.emc-wi.com



WHAT OTHERS SAY



At one time, every person quoted on this page was facing the same decision you are.

They knew they needed someone to help them with their environmental health and safety, but didn't know if EMC was the right choice.

This is what they have to say since choosing EMC.



“EMC is there from the first day to the last day and will not let go of a project until it is completely finished. If they run a project for you, you can expect only first rate service. I have seen no other company that can match EMC for quality of service and commitment to the customer.” **Tom Riffle** — *Madison Area Technical College*

“I have worked with EMC for many years and find them to be extremely organized and highly trained to handle the environmental issues I encounter. I appreciate working with an established company like EMC that partners with me on all phases of environmental concerns and delivers proven, successful results.” **Gary Siegman** — *Whitefish Bay School District*



“We have switched our environmental consulting to EMC since we were so pleased with their response to our mold crisis. We haven't been disappointed.”

Ken Bates — *Columbus School District*

“EMC has provided environmental project oversight for MGE for a number of years at our power plant and on other projects. They have provided the necessary expertise to guide many projects to a successful conclusion. EMC has never failed to meet a deadline.”

Philip Nelson — *Madison Gas and Electric*



800.279.2020

www.emc-wi.com

